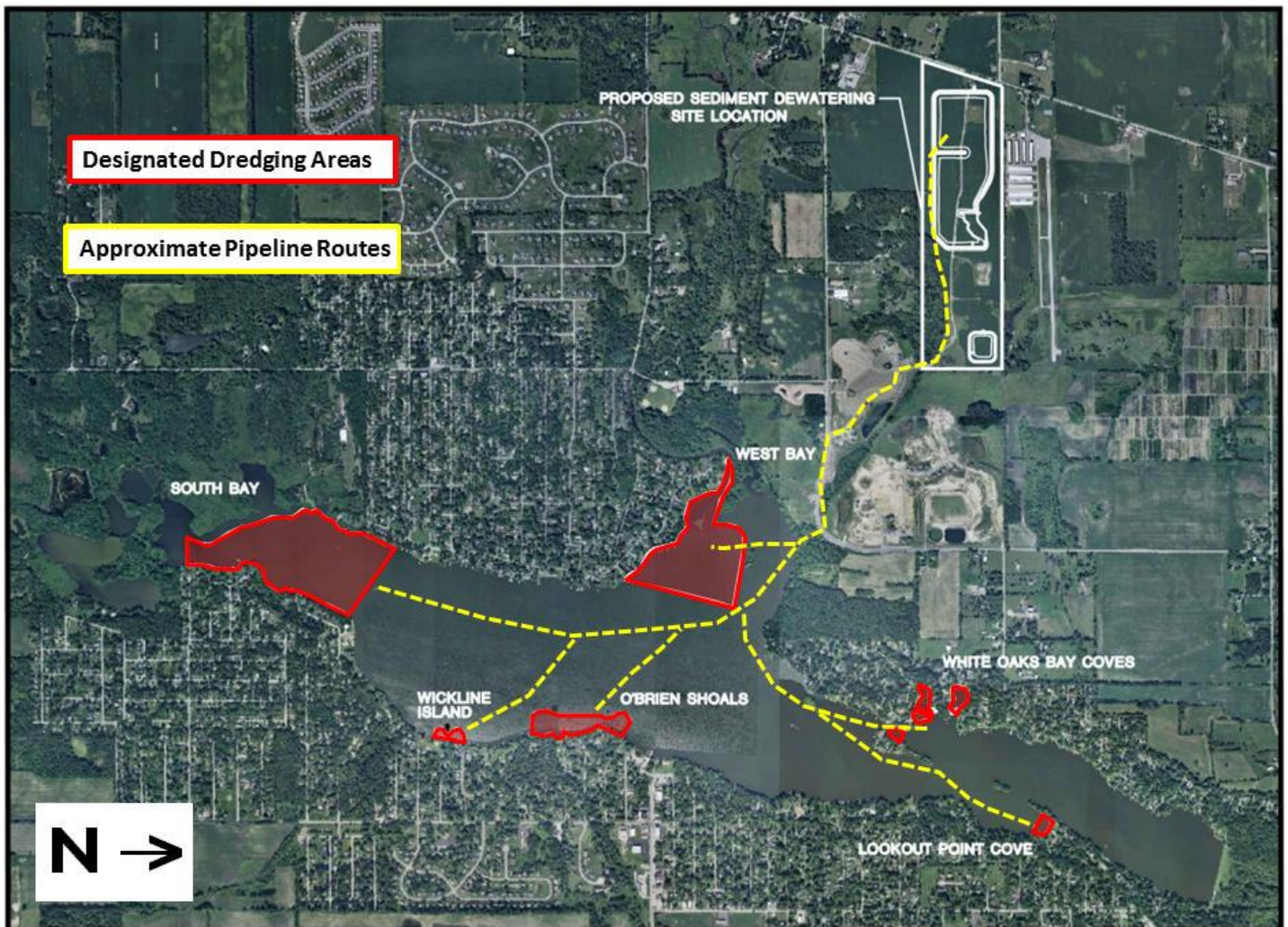


Notice to Lake Users – 2014 Boating Season

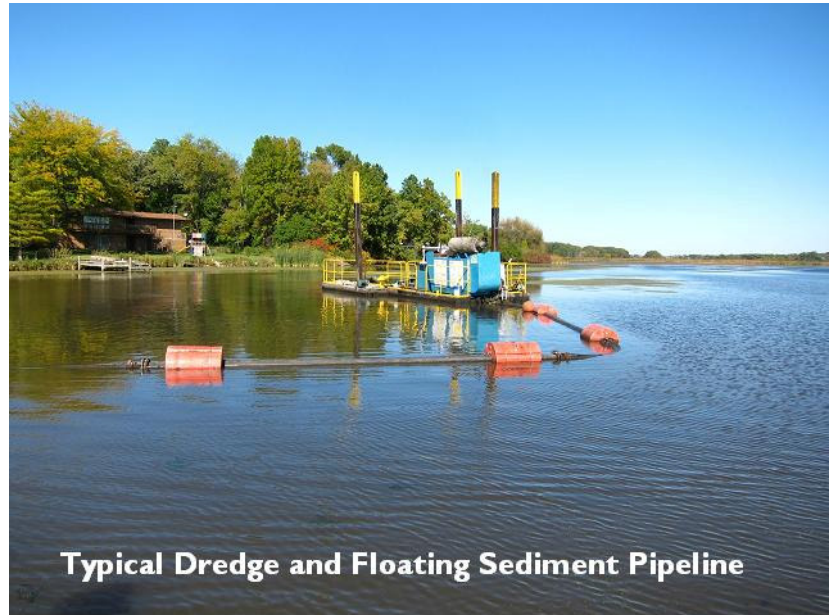
Beginning in 2014, the Wonder Lake dredging project will be getting underway. This project will include bringing a large hydraulic dredge onto the lake, which will then be used to remove sediment from selected areas of the lakebed. As the dredge dislodges and sucks up the sediment, the dredged sediment will be pumped into a high-density polyethylene (HDPE) pipeline that will extend across the lake from each dredging area to where the sediment pipeline will leave the lake along the north side of the West Bay, where Galt Creek enters the lake. At Galt Creek, the sediment pipeline will then run overland to the Sediment Drying Site located northwest of the Meadows of West Bay.

The exhibit below provides general information on the locations proposed to be dredged in 2014, as well as a representation of all the various lake areas where the sediment pipeline (shown by the dashed lines) may be present as specific areas are dredged. It should be noted that the same pipeline will be used for all the proposed dredging areas, and will be moved as the dredge moves to a new area. As such, there will only be one pipeline route during each dredging phase that lake users must be aware of.

Because of the long distance between the lake and the Sediment Drying Site, the dredging contractor will also need to use a booster pump at one or more locations along the sediment pipeline. For safety to both the dredging contractor and lake users, “no-wake” zones and restricted areas will be established.



The sediment pipeline will be both floating and submerged. While the dredge is in operation, the weight of the dredged sediment moving through the pipeline will cause the pipeline to “sink” below the water surface, so that it may not be visible to lake users. When dredging stops for maintenance, or at the end of the workday, the pipeline may “float” back to the surface. In this “floating” condition, the sediment pipeline may only protrude one foot or less above the surface of the lake. As the pipeline is black, its visibility, particularly after dark, will be minimal. To improve visibility of the sediment pipeline, the dredging contractor will be responsible for installing marker buoys and/or warning flags along the pipeline. “No-wake” buoys will be located within proximity to all dredging areas as work progresses.



Typical Dredge and Floating Sediment Pipeline

In addition, one or more segment of the sediment pipeline will be anchored / weighted to keep it permanently submerged, so that lake users will be able to safely pass over the submerged

sediment pipeline at a “no-wake” speed. This will allow all areas of the lake to remain accessible during dredging operations. This crossing point will be clearly marked with buoys and/or flagging.

It is important to note that the location of the dredge, booster pump, sediment pipeline, and designated pipeline crossing point will change throughout the dredging project.

The areas of the lake where the dredge is working and the pipeline is located are “restricted areas”. A minimum distance of one hundred (100) feet must be maintained between lake use activities and dredging equipment / pipeline. Any boating activity within that zone that needs to be conducted to access docks or to cross the pipeline at the designated location, must be done at a “no-wake” speed.

The Wonder Lake Marine Patrol will be paying particular attention to lake use activities in proximity to the dredging operations, and will issue citations for unsafe watercraft operation.

Because of these new and changing conditions on the lake that will be occurring during 2014, the MPOA urges all lake users to use extra caution when operating any watercraft in the vicinity of the dredge, booster pump, or sediment pipeline. As always, lake users are encouraged to consider safety first, and to make appropriate choices as to the speed and manner of operation of any motorized vehicle.

As additional information becomes available from the dredging contractor, the MPOA will post information on the MPOA website www.wlmpoa.org. Lake Users should regularly monitor the MPOA website for updates on lake dredging operations and how they will affect lake usage.

Lake Users should also sign up to receive "Important Lake Update" email notices from the MPOA regarding lake dredging operations or other urgent lake related issues. Sign up by sending an email to wlkathy@wonderwave.net asking to be added to this mailing list.